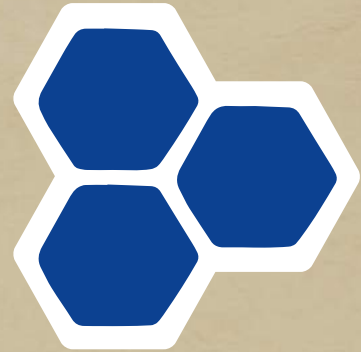


One Vision

One Network

KulturGutRetter



One Vision

Developing an emergency mechanism for cultural heritage in crisis situations worldwide.

One Network

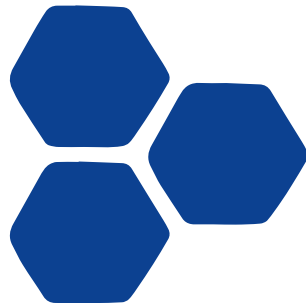
The Archaeological Heritage Network (ArcHerNet) was founded in 2016 and pools German expertise to safeguard and protect cultural heritage worldwide.

KulturGutRetter (KGR)

The KGR project developed within the Archaeological Heritage Network is carried by three strong partners:

ArcHerNet

Archaeological Heritage Network



KulturGutRetter



German Federal Agency for Technical Relief (THW)

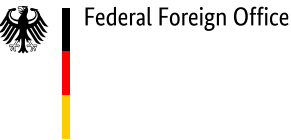
For 70 years now the THW has provided technical and humanitarian assistance in crises and natural disasters in Germany and abroad on behalf of the federal government. It is a federal agency under the jurisdiction of the Federal Ministry of the Interior, Building and Community.



GERMAN
ARCHAEOLOGICAL INSTITUTE

German Archaeological Institute (DAI)

Founded nearly 200 years ago, the DAI is a globally active scientific institution. Operating as a federal agency within the area of responsibility of the Federal Foreign Office, it is committed to protecting and preserving cultural heritage.



Römisch-Germanisches Zentralmuseum (RGZM)

The RGZM is an archaeological research facility founded in 1852. Part of the Leibniz Association, it combines the humanities and natural sciences with restoration expertise and is active in an international context.



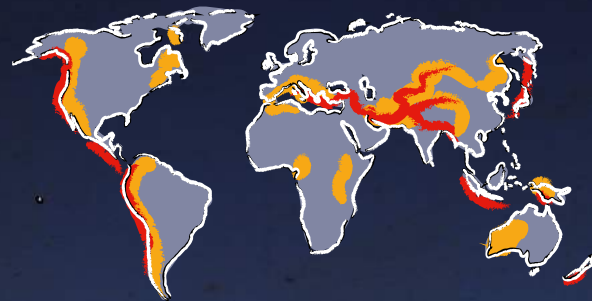


A coastal town

18:30 local time

Earthquakes worldwide:

- 1x per year magnitude 8 +
- 15x per year magn. 7 – 8
- 140x per year magn. 6 – 7

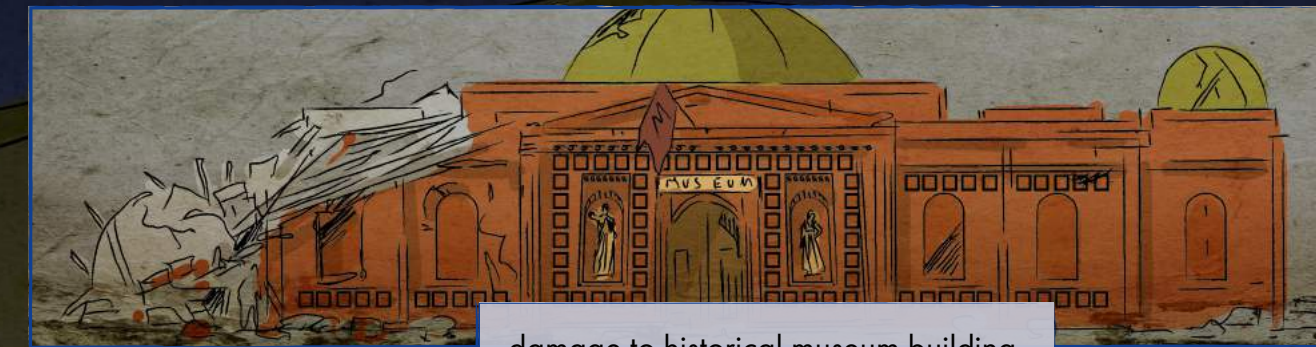


Disaster strikes

Severe earthquake in the night



supply of drinking
water in danger



damage to historical museum building



landslide



tsunami
flooding



oil spill



power outages

+++ 3:15 local time +++ coastal town hit by earthquake +++ magnitude 7 on Richter scale +++ many buildings damaged +++ critical infrastructure destroyed +++ warning of aftershocks +++ 3:15 local time +++ coastal town hit by earthquake +++ magnitude 7 on Richter scale

The morning after

Rescue operations begin



Earthquake in the night



National aid efforts begin



Unique collections badly damaged.
Museum warns of aftershocks.

+ humanitarian crisis +++ state of emergency declared +++ severe damage in town centre +++ appeals for international aid +++ cultural heritage

Preparation and planning

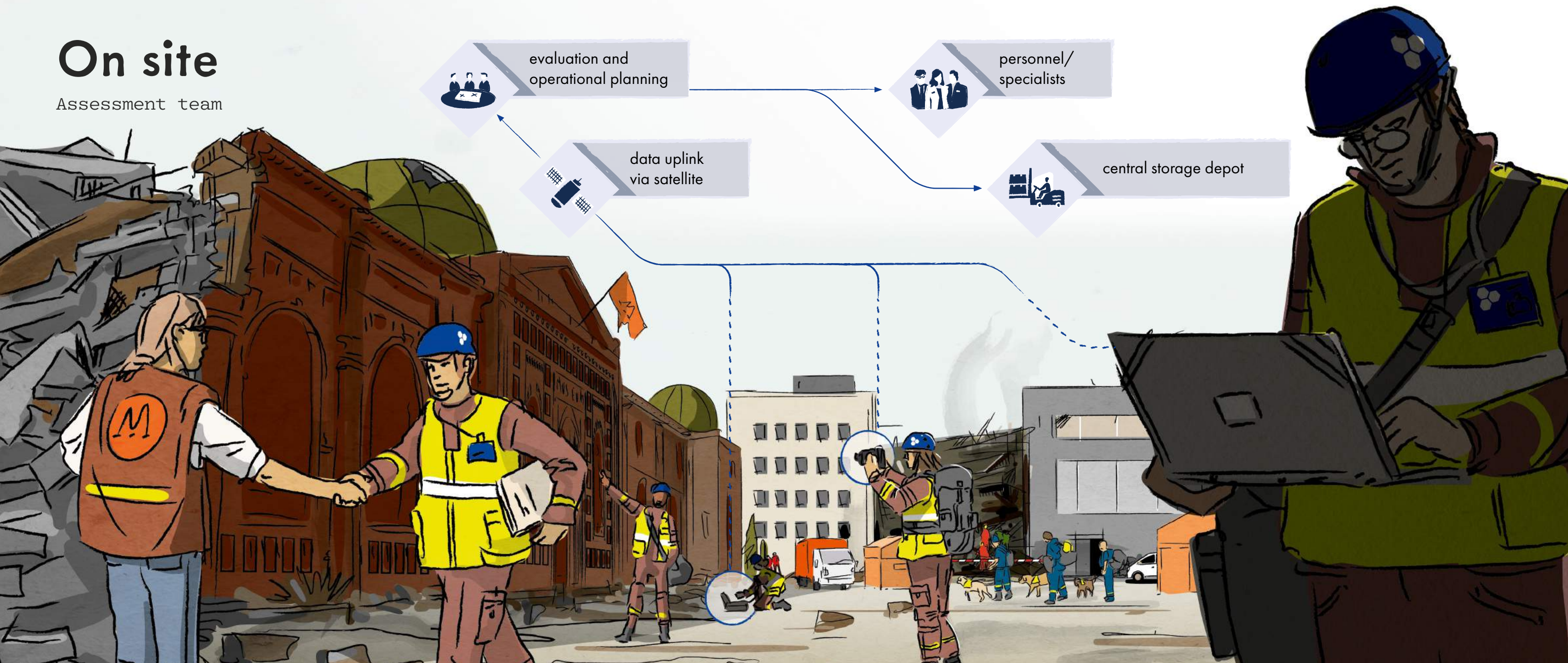
in Germany



+ activation +++ situation analysis +++ damage reports +++ on-site assessment +++ strategic planning +++ assessment teams +++ basics +++ asses

On site

Assessment team



++ first responders +++ damage assessment +++ risk analysis +++ needs assessment +++ protective equipment +++ measuring devices +++ lighting ++

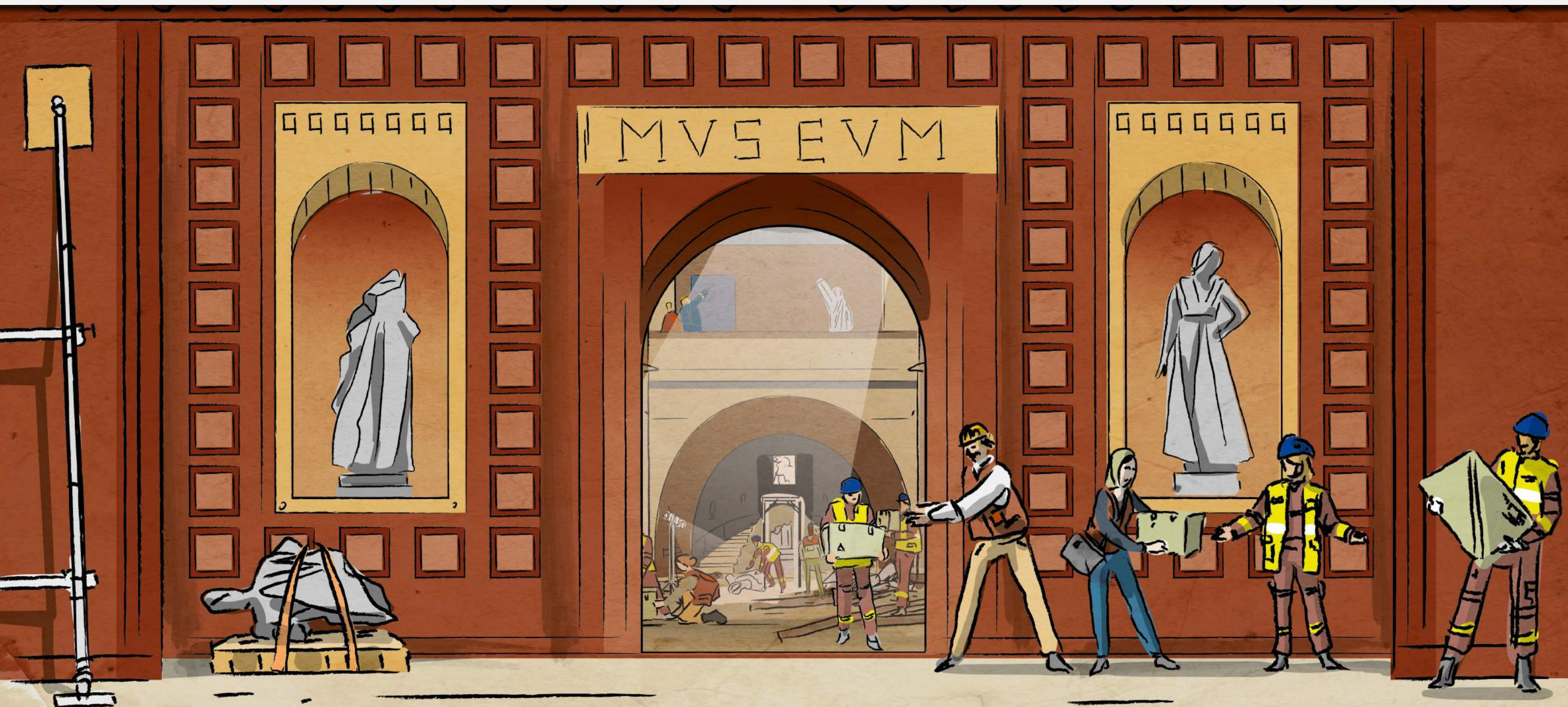
++ salvaging +++ screening +++ identification +++ documentation +++ evaluation +++ triage +++ safeguarding +++ protection +++ boxing +++ recov

KulturGutRetter

in action



++ salvaging +++ screening +++ identification +++ documentation +++ evaluation +++ triage +++ safeguarding +++ protection +++ boxing +++ recov



Emergency stabilization

in the rescue tent



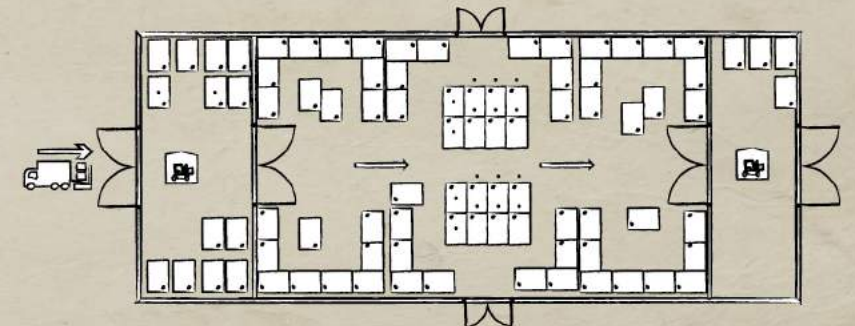
Modular tables

A standardized and lightweight system for emergency conservation, documentation and protective packaging. Units can be fitted together serially and scalably as required.



Layout of stations in tent

Process-oriented layout with entrance depot. Variable work station sections for different material groups and air-conditioned temporary storage area.



++ temporary storage +++ relocation +++ textiles +++ sculptures +++ ceramics +++ glass +++ papers +++ archives +++ manuscripts +++ films and p

++ Thanks to all involved! +++ Danke, ευχαριστώ, Merci, धन्यवाद, Gracias, شکرا +++ 🙏👍😊🙌 +++

Safeguarding measures successful



Post-Disaster

The emergency recovery measures aren't the end of the job

Training decision-makers

KulturGutRetter and ArchHerNet can share the expertise of their partners, contributing to disaster recovery and emergency preparedness.

Capacity building

Physical and digital capacity building globally is an important component of disaster recovery and emergency preparedness.

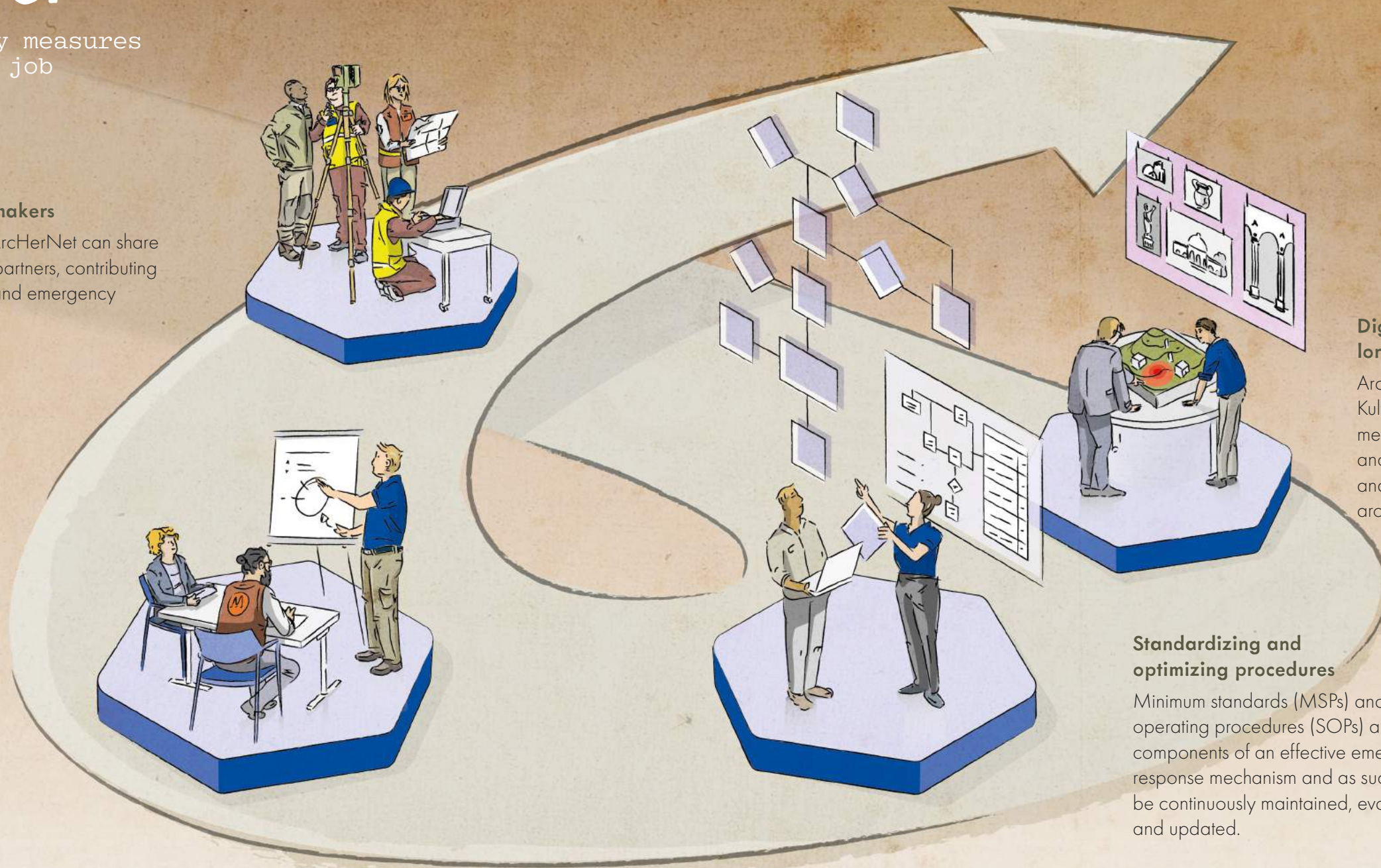
Digitization and long-term structures

ArchHerNet projects as well as KulturGutRetter support the establishment of long-term digital structures and systems for cultural preservation and the protection of cultural assets around the world.

Standardizing and optimizing procedures

Minimum standards (MSPs) and standard operating procedures (SOPs) are essential components of an effective emergency response mechanism and as such should be continuously maintained, evaluated and updated.

For more information



© DAI | KulturGutRetter, 2021

Published by

German Archaeological Institute
www.dainst.org

Design, Cover, Layout

INFOGRAFIK PRO GmbH
www.infografik.pro

Translation

Giles Shephard

Printed by

Königsdruck Printmedien und digitale Dienste GmbH | 500 copies

Distribution

Deutsches Archäologisches Institut | KulturGutRetter
Podbielskiallee 69-71 . 14195 Berlin
archernet@dainst.de
www.archernet.org

All rights of use to the image material in this publication rest with the German Archaeological Institute. Further use is permissible only once express authorization has been obtained.

Supported by



Deutscher Bundestag



Federal Foreign Office



